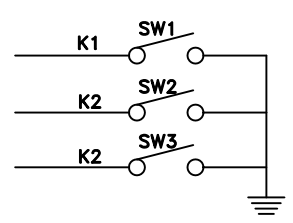
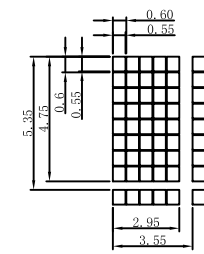
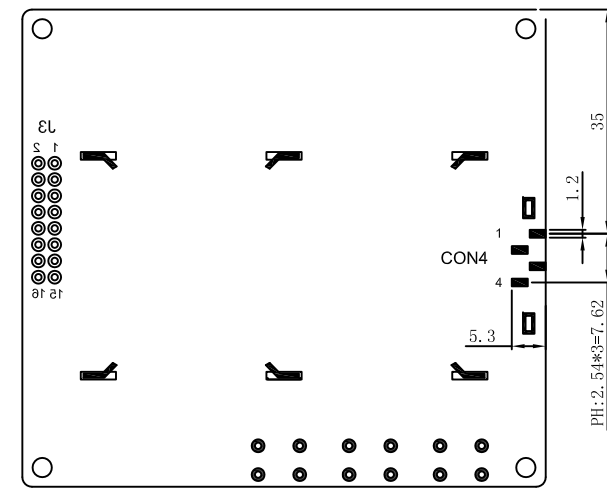
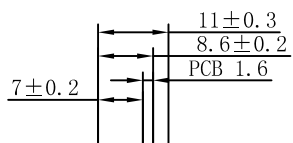
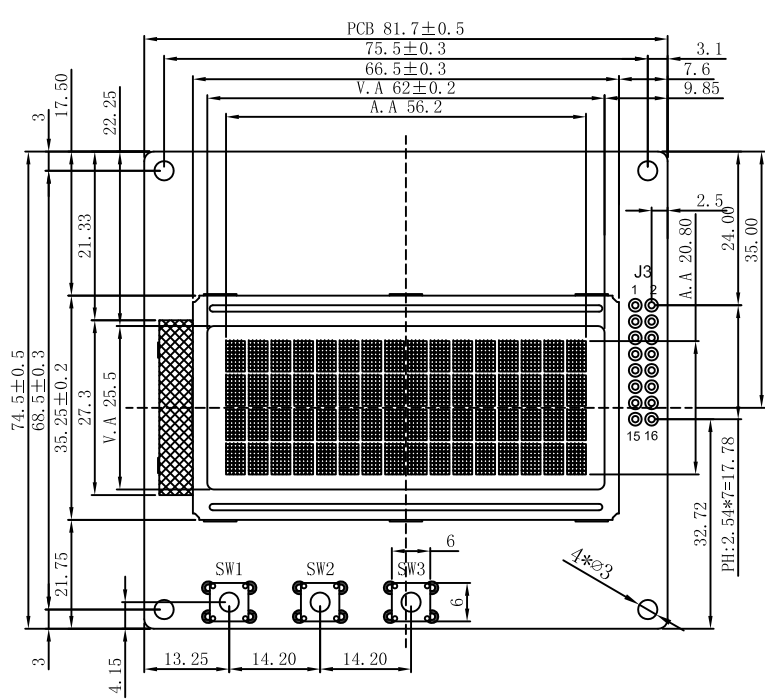


Revised Record	1.0	New issue	2015-01-28	3.0	Update location of V. A.	2015-02-06		
	2.0	Update location of V. A.	2015-02-02					

INTERFACE:			
CON4		J3	
1	R+(5.0V)	1	N.C
2	R0(VSS)	2	RS
3	N.C	3	RW
4	N.C	4	EN
		5	D7
		6	D6
		7	D5
		8	D4
		9	D3
		10	D2
		11	D1
		12	D0
		13	K1
		14	K2
		15	K3
		16	N.C



Customer's Choices:

DISPLAY TYPE:	
View angle:	
Temp:	
Voltage:	
IC:	
Fonts:	
Backlight:	
Other:	

- NOTES:
- | | |
|----------------------------|---|
| 01. DISPLAY TYPE: | STN(YELLOW-GREEN)/POSITIVE/TRANSFLECTIVE RoHS |
| 02. OPERATING VOLTAGE: | VDD=5.0V |
| 03. OPERATING TEMPERATURE: | -20°C~+70°C |
| 04. STORAGE TEMPERATURE: | -30°C~+80°C |
| 05. DRIVE MODE: | 1/16DUTY,1/5BIAS |
| 06. VIEWING DIRECTION: | 6:00 |
| 07. DRIVE IC: | ST7066(OR-EQV) |
| 08. CONNECTOR: | ZEBER |
| 09. BACKLIGHT: | YELLOW-GREEN |
| 10. CUSTOMER'S PART ID: | BLAZE_STANDARD_PRODUCT |

BLAZE Blaze Display Technology Co.,Ltd.

DESIGNED BY: BDT-26	BCB1604-01C-SERIES	VERSION: 3.0
CHECKED BY: BDT-04		PAGE 1 OF 1
APPROVED BY: BDT-01		UNIT: mm
Website: http://www.blazedisplay.com		DATE: 2015-02-06