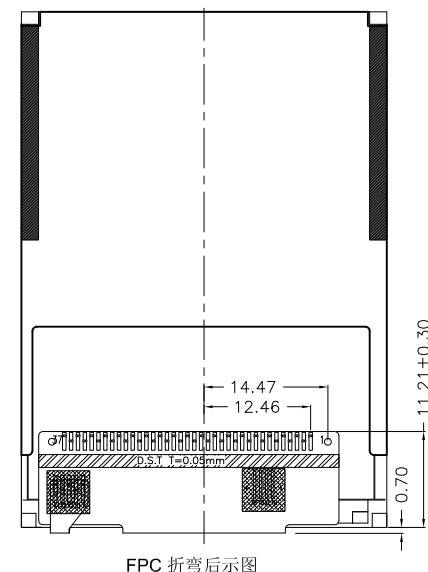
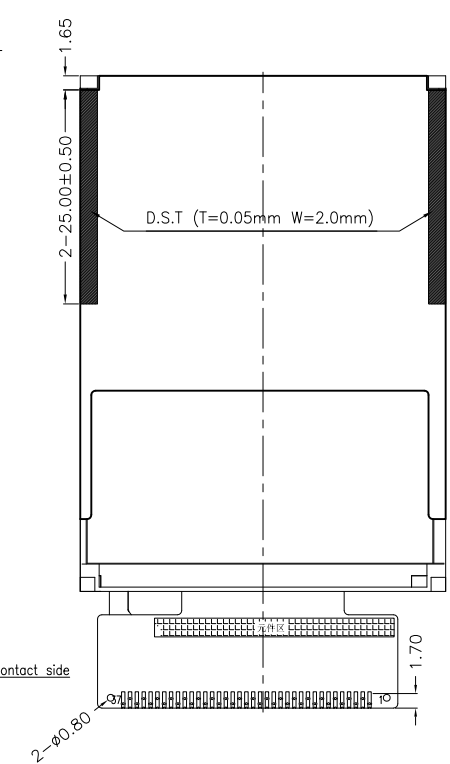
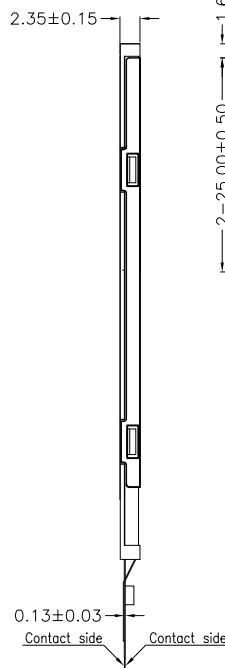
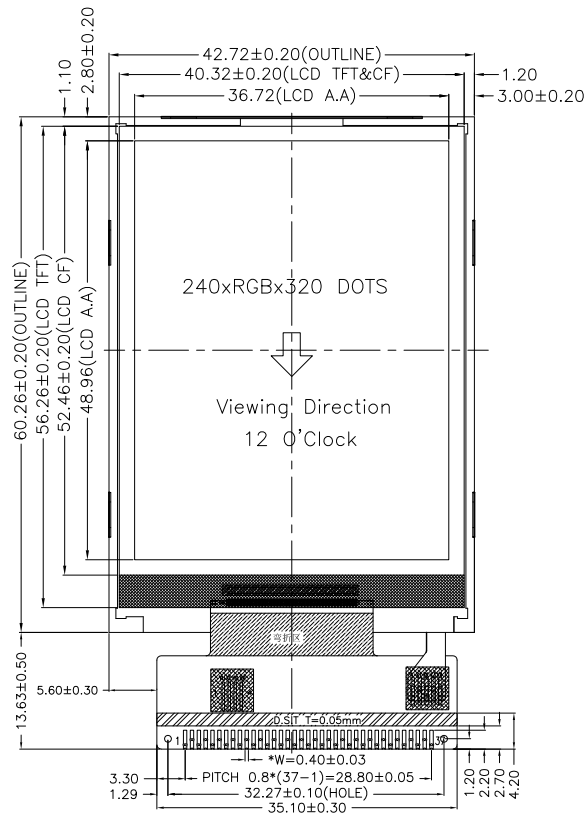
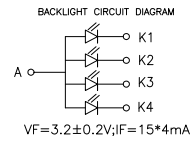


Revised Record

1.0	New Issue	2013-06-30
2.0	Change FPC define	2013-10-14



PIN	DESC.
1	DB0
2	DB1
3	DB2
4	DB3
5	GND
6	VCC(1.8V/2.8V)
7	/CS
8	RS
9	/WR
10	/RD
11	IM0
12	XR(X-)
13	YU(Y+)
14	XL(X+)
15	YD(Y-)
16	LEDA
17	LEDK1
18	LEDK2
19	LEDK3
20	LEDK4
21	NC
22	DB4
23	DB8
24	DB9
25	DB10
26	DB11
27	DB12
28	DB13
29	DB14
30	DB15
31	/RESET
32	VCC
33	VCC
34	GND
35	DB5
36	DB6
37	DB7



DISPLAY TYPE:	2.4" TFT	DISPLAY DRIVER:	ST7789S-G4A	PIXEL PITCH:	0.153 X 0.153 mm
POLARIZER MODE:	TRANSMISSIVE	OPERATING TEMP:	-20°C TO +70°C	BACK LIGHT:	LED WHITE(X4), 并联
VIEWING DIRECTION:	12 O'CLOCK Gray inversion	STORAGE TEMP:	-30°C TO +80°C		
Dot matrix:	240(RGB)X320 DOTS	STRUCTURE:	LCD+IC+FPC+BL	MATERIAL NOTE	ROHS REQUEST

**BLAZE** Blaze Display Technology Co., Ltd.

DESIGNED BY:	BDT-23	BDT-T2437-01-SERIES	VERSION:	2.0
CHECKED BY:	BDT-09		PAGE	1 OF 1
APPROVED BY:	BDT-05		UNIT:	mm
Website: <a href="http://www.blazedisplay.com">http://www.blazedisplay.com</a>			DATE:	2013-10-14